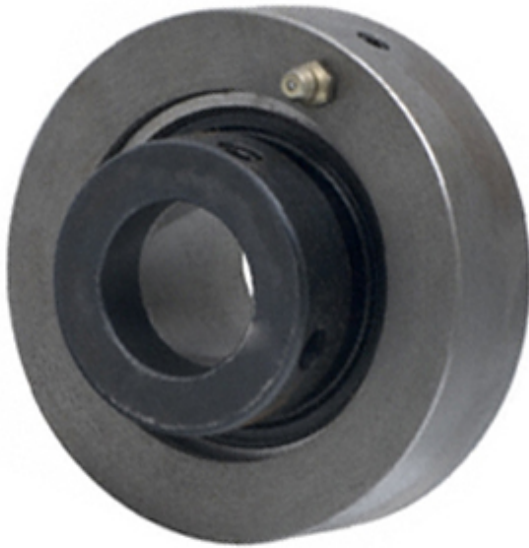




GARLOCK BEARINGS LTD



CYL-SXR-105 Bearing 2D drawings and 3D CAD models

DODGE CYL-SXR-105 Cartridge Unit Bearings

Bearing No. CYL-SXR-105

Category	Cartridge Unit Bearings
Inventory	0.0
Manufacturer Name	ABB MOTORS AND MECHANICAL INC
Minimum Buy Quantity	N/A
Weight	1.23
Product Group	M06110
Mounting Method	Eccentric Collar
Housing Style	Cartridge Unit
Housing Material	Cast Iron
Rolling Element	Ball Bearing
Expansion / Non-expansion	Non-expansion
Relubricatable	Yes
Insert Part Number	INS-SXR-105
Seals	Proguard Seal
Other Features	Single Row Normal Duty
Long Description	1-5/16" Bore; 3-7/8" Outside Diameter; 1-1/16" Cartridge Housing Width; Eccentric Collar; Cartridge Unit Housing; Cast Iron; Ball Bearing; 2-1/64" Length Thru Bore; Relubricatable;
Inch - Metric	Inch
Category	Mounted Cartridge Units
UNSPSC	31171535
Harmonized Tariff Code	8483.20.40.40
Noun	Bearing



GARLOCK BEARINGS LTD

Keyword String	Cartridge
Manufacturer URL	http://dodge-pt.com
Manufacturer Item Number	CYLSXR105
Manufacturer Internal Number	131364
Weight / LBS	2.7
D	2.016 Inch 51.206 Millimeter
Cartridge Housing Width	1.063 Inch 27 Millimeter
D	3.875 Inch 98.425 Millimeter
d	1.313 Inch 33.35 Millimeter