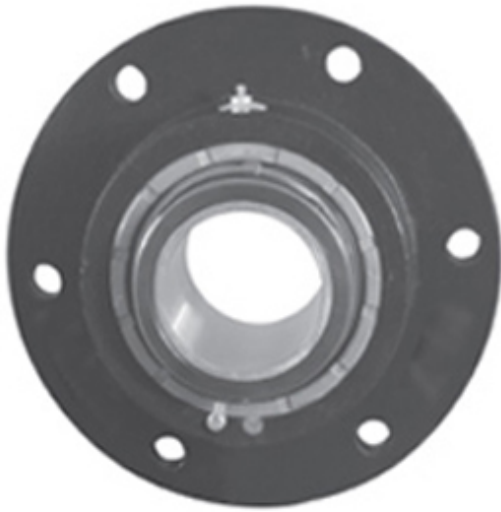




# GARLOCK BEARINGS LTD

## REXNORD ZF5407YSA Flange Block Bearings



Bearing No. ZF5407YSA

ZF5407YSA Bearing 2D drawings and 3D CAD models

|                           |  |
|---------------------------|--|
| Category                  | Flange Block Bearings  |
| Inventory                 | 0.0  |
| Manufacturer Name         | REXNORD  |
| Minimum Buy Quantity      | N/A  |
| Weight                    | 40.406   |
| Product Group             | M06288   |
| Number of Mounting Holes  | 6  |
| Mounting Method           | Concentric Collar  |
| Housing Style             | 6 Bolt Round Flange Block  |
| Rolling Element           | Spherical Roller Bearing   |
| Housing Material          | Cast Iron  |
| Expansion / Non-expansion | Non-expansion  |
| Mounting Bolts            | 1 Inch   |
| Relubricatable            | Yes  |
| Insert Part Number        | 5407YU   |
| Seals                     | Clearance Seal   |
| Housing Configuration     | 1 Piece Solid  |
| Pilot Configuration       | With Pilot   |
| Inch - Metric             | Inch   |
| Long Description          | 6 Bolt Round Flange Block;<br>4-7/16" Bore; 12.9" Bolt<br>Circle; 6-7/16" Bolt Spacing;<br>1 Piece Solid; Concentric<br>Collar Mount; Cast Iron;<br>Spherical Roller Bearing;<br>6-1/4" Length Thru Bo |
| Other Features            | Double Row   Double<br>Collar   Open Auxiliary End<br>Cap Threaded Cover Side  |



## GARLOCK BEARINGS LTD

|                                    |   |
|------------------------------------|---|
|                                    | With Set Screw  |
| Category                           | Flange Block  |
| UNSPSC                             | 31171501  |
| Harmonized Tariff Code             | 8483.20.40.80   |
| Noun                               | Bearing   |
| Keyword String                     | Flanged   |
| Manufacturer URL                   | <a href="http://www.rexnord.com">http://www.rexnord.com</a> |
| Manufacturer Item Number           | ZF5407YSA   |
| Manufacturer Internal Number       | 150501  |
| Weight / LBS                       | 96  |
| Cartridge Pilot Depth              | 0.188 Inch   4.775<br>Millimeter                            |
| Cartridge Pilot Diameter           | 10.375 Inch   263.53<br>Millimeter                          |
| Bolt Spacing                       | 6.438 Inch   163.525<br>Millimeter                          |
| d                                  | 4.438 Inch   112.725<br>Millimeter                          |
| Nominal Bolt Circle Diameter Round | 12.9 Inch   327.7 Millimeter                                |
| D                                  | 6.25 Inch   158.75<br>Millimeter                            |